

# Hanse 548 – Press manual

13.07.2017



*Hanse*   
BREAKING RULES . SETTING TRENDS

315 NEW 348 NEW 388 NEW 418 455 505 NEW 548 575 588 675

[www.hanseyachts.com](http://www.hanseyachts.com)



# Highlights



315 NEW 348 NEW 388 NEW 418 455 505 NEW 548 575 588 675

[www.hanseyachts.com](http://www.hanseyachts.com)

# Highlights

## - Fast Cruising -

- ▶ Judel / Vrolijk & CO designed hull for optimized performance, stability and balance of the vessel
- ▶ High rig and large sail area for a stunning performance
- ▶ Various keel options to match sailing area and performance
- ▶ Optional furling-reacher on second forestay improving upwind and reaching performance in lighter winds
- ▶ Gennaker for maximum downwind performance

# Highlights

## - Easy Sailing -

- ▶ Easy sailing concept with all functions operable from the helm position with one set of winches only
- ▶ Deckslayout and coachroof design ensuring optimum view when helming the vessel
- ▶ Twin wheel steering with optional instrument pod and all instruments at the helm position
- ▶ Mainsheet on coachroof to allow maximum comfort in cockpit
- ▶ Self-tacking jib for easy manouvering
- ▶ Optional electric furling systems for easy handling of sails
- ▶ Optional electrical secondary winches on GRP winchbase inside cockpit for more safety in maneuvres

# Highlights

## - Innovative design -

- ▶ Sleek and elegant Hanse exterior profile
- ▶ New „Hanse family look“ interior and exterior – Design, materials and quality throughout the whole fleet
- ▶ Modern Hanse furniture design
- ▶ Innovative „smart boat system“ touchscreen for electrics and electronics
- ▶ Large saloon glass deck „window“ with four openable hatches – 12 openable deck hatches overall
- ▶ Easy access to the bathing platform by comfortable transom stairs
- ▶ Featuring a hydraulic bathing platform with optional, retractable swimming stair for improved access to the sea
- ▶ Electrically retractable optional TV integrated in deck innerliner of master cabin

# Highlights

## - Individual customization -

- ▶ Various cabin versions featuring a standard VIP cabin layout
- ▶ Various wood and fabric choices for interior and exterior
- ▶ Fixed GRP hardtop for light and shade provision on deck
- ▶ Several canvas and canopy options incl. a fixed windscreen
- ▶ Innovative swimming stair and a hydraulic gangway option allowing easy access to the sea and the vessel
- ▶ The optional wetbar with washing basin, BBQ and optional fridge completes the aft of the vessel to become a „second cockpit“
- ▶ TV and entertainment options



# Concept

*Hanse*   
BREAKING RULES . SETTING TRENDS

315 NEW 348 NEW 388 NEW 418 455 505 NEW 548 575 588 675

[www.hanseyachts.com](http://www.hanseyachts.com)

## Concept – Rig and Sails

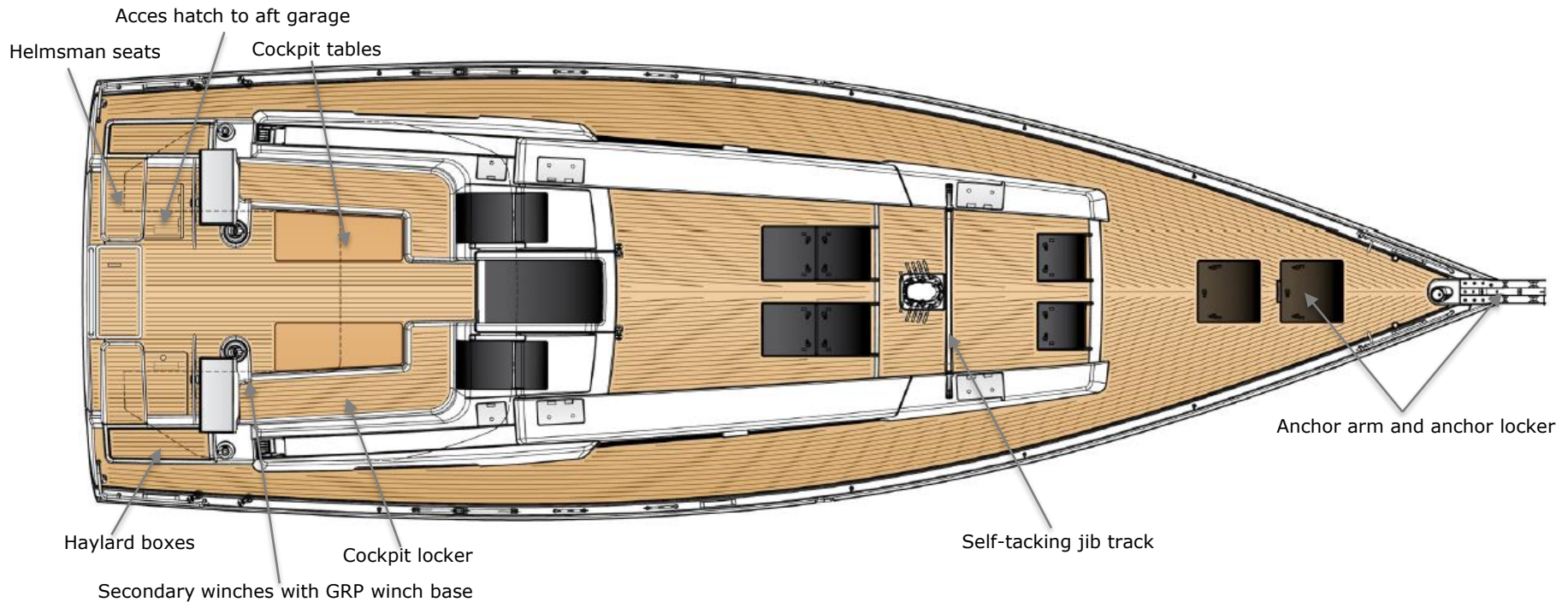


The enormous sail plan makes the Hanse 548 being one of the best performing vessels of its class. Due to the excellent aero- and hydrodynamic concept of Judel / Vrolijk & CO - featuring a second forestay with an optional reacher and a huge Gennaker - she is in combination with the three keel options always well balanced and easy to handle.

By this, performance meets the clients requirements at its best - stunning performance, easy to sail and tuned for the clients area. An optimized and well thought deckslayout, various optional furling systems with a manual jib furler in standard and a self-tacking jib are completing an astonishing vessel.



## Concept – Deckslayout



The deckslayout features the Hanse easy sailing concept with all functions operable from the helm position with one set of winches only. The huge cockpit with two cockpit tables (can optional be lowered to achieve a laying area) combines comfort and safety. Halyard boxes, a cockpit locker and direct access to the aft

garage keep the deck clean and give stowage for all equipment on board. An anchor arm at the bow and the anchor locker make the anchoring manoeuvre easy at any time. Optional secondary winches on a GRP winch base give the opportunity for more ambitious sailing and manoeuvring.

## Concept – Deck Hatches and Windows



Light and view below deck are essential and bring the focus to an extraordinary interior styling. Therefore the Hanse 548 has overall 12 openable hatches on deck.

The central saloon glass window area is made out of four Size 70 openable flush hatches. The glass companion way and four coachroof and hull windows are completing the concept. Three Size 70 hatches and another four hull windows make

the owner feel the comfort of his master cabin. Deck windows next to the companion way, the aft coachroof windows, two hull windows and a cockpit side hatch are providing the maximum of light to both aft cabins. Frosted, openable hatches for the bathrooms are offering privacy when relaxing while taking a shower.

## Concept – Aft Cockpit



To increase the space in the cockpit and to offer even more comfort, the aft cockpit can be tuned to become a „second cockpit“. The optional helmsman seats in combination with a wetbar - containing a BBQ, washing basin and an optional fridge - and with the additional cushions make the aft part of the boat comfortable when sunbathing but also under sails. Access to the hydraulic bathing platform is granted by an

openable hatch and comfortable stairs. An optional „swimming stair“ is unique in a boat of this size and guarantees by its angle and big steps easiest access to the sea for all the crew and even pets. It can easily be retracted from the bathing platform. A dinghy can be kept by optional retractable davits or be stowed in the aft garage. A compressor allows inflating it in shortest time.

## Concept – Hardtop, Bimini and Canvas Covers



An optional hardtop provides shade and weather protection to the cockpit. Being built with a carbon fibre reinforced arch, it contains the mainsheet as endboom sheeting. An integrated sliding canvas makes you choose the amount of sun in the cockpit. It can be combined with a glass or canvas

windshield and the forward and the side part up to the arch can be closed by a canvas cover.

If ordered without a hardtop an optional bimini or a cockpit canopy are protecting the crew in the cockpit.

## Concept – Deck Cushions



The optional lowerable cockpit table allows achieving a laying area and in combination with the optional sunbed on coachroof and foredeck and the aft cockpit, the deck invites for relaxing and sun bathing for even a big crew.

## Concept – Furniture Design



With its innovative and modern furniture design, the Hanse 548 is an extraordinary yacht. Various wood options can be combined - next to the numerous upholstery choices - with upper cupboard fronts in „ Pearl“ or „Dove Grey“. The saloon upholstery is designed to achieve the impression of a settee with still the maximum of stowage below.

Wooden bulkheads, GRP liners in the heads, washing basins in special Hanse Design and shower doors in all heads are just some of the features of the new Hanse 548. The combination of various cabin layouts and the different choices ensure a modern and individual yacht.

## Concept - Saloon



The Hanse 548 saloon is reduced but offers a maximum of comfort and functionality. A dining area on starboard, a lounge on port and a real marine galley - that allows cooking also while sailing - are the key features of this saloon. The chart table has a folding seat or an optional stool.

Complete your dining area with the optional central settee - containing a little bar and a handrail - and the navigation stool and enjoy your dinner with 8-10 people. The turnable TV above the chart table allows you to relax a moment with a movie.

## Concept – Master Cabin



The Hanse Silent Master cabin concept is just the top of a modern and stylish master cabin featuring a three door cupboard and the king size island berth of 1.60 x 2 m. An ensuite head with the Hanse design washing basin, an optional electric toilet and a separate shower stall complete the cabin. Lay back, retract your optional TV from the ceiling by an custom electric system and watch your favorite movie.

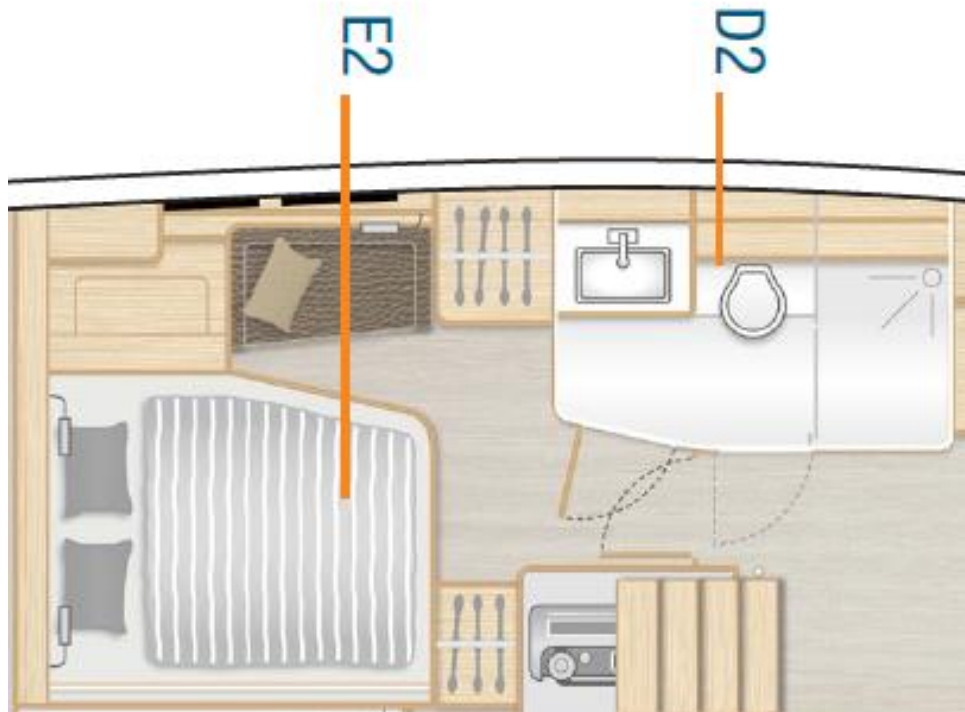
### HANSE SILENT MASTER CABIN



Maximum noise reduction system



## Concept – Aft Cabin

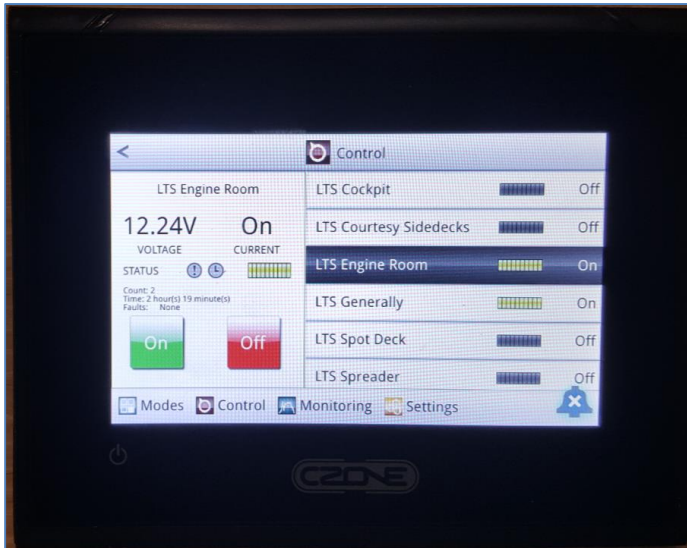


The portside aft cabin is a VIP cabin. The king size bed of 1.60 x 2 m offers a maximum of comfort. A little settee allows to back out and relax. The luxurious ensuite head offers the Hanse design washing basin, an optional electric toilet and a separate shower stall. The optional dayhead door allows also access from the saloon.

A sound insulation separates the VIP cabin from the starboard cabin.

The starboard cabin also offers a bed of 1.60 x 2 m. Even it is a little more reduced due to the VIP cabin on port it has its own head (picture).

## Concept – Smart Boat System



The new and innovative „Hanse Smart Boat System“ allows control of all 12V and 230V functionalities on board. Tank levels, battery capacities, lights, pumps, genset, fridges and air conditioning (function not yet available) can be controlled from a C-Zone touch screen in the saloon but as well via all chart plotters.

In the restaurant? Forgotten to turn off the lights – no problem with the app on your smartphone.



# Standards



315 NEW 348 NEW 388 NEW 418 455 505 NEW 548 575 588 675

[www.hanseyachts.com](http://www.hanseyachts.com)

## Principle dimensions



LOA		16.22 m	53' 3"
Hull length		15.75 m	51' 8"
LWL		14.90 m	48' 11"
Beam		5.05 m	16' 7"
Draft			
	shallow keel	2.20 m	7' 3"
	L-keel, medium	2.55 m	8' 4"
	T-keel, deep	2.80 m	9' 2"
Displacement			
	shallow keel	approx. 19.80 t	43.652 lbs
	L-keel, medium	approx. 19.60 t	43.211 lbs
	T-keel, deep	approx. 19.00 t	41.888 lbs
Engine Diesel			
	standard	approx. 110 PS	110 hp
Fuel tank		approx. 520 l	137 gal
Fresh water		approx. 770 l	203 gal
CE Certificate		A - 12	
	Design	judel / vrolijk & co	
	Interior	HanseYachts Design	
Mast length above WL		approx. 24.70 m	81' 0"
Total sail area		approx. 138.00 qm	1485 sq ft
Main sail	standard	approx. 80.50 qm	866 sq ft
	furling	approx. 71.00 qm	764 sq ft
Self-tacking jib		approx. 57.50 qm	619 sq ft
Reacher		approx. 100.00 qm	1.076 sq ft
Gennaker		approx. 210.00 qm	2.260 sq ft

## Standards

### HULL

- 12 hull windows (6 each side)
- Cockpit locker on stb, reduced dinghy garage, stowage for running rigging at helm position, anchor locker at bow
- GRP hull, isophthalic gelcoat, colour: Signal White (RAL 9003), 1st layer vinyl ester resin
- Waterline and cove line, isophthalic gelcoat, colour: Dark Grey (RAL 7043)

### KEEL

- L-keel, cast iron, draft: 2.55m
- GRP rudder with seawater resistant aluminium shaft and self-aligning bearings

### LAYOUT & INTERIOR

- A1: Sail locker with extensive storage space
- B1: Master cabin with island double berth, storage space and a head with separate shower stall
- C1: Saloon with full functional island galley and dining area on stb and lounge area with chart table on port
- D1: Cabin with double bunk bed on port with storage incl. hanging locker
- E2: 2 aft cabins with VIP cabin on port incl. "Queen size" bed and guest cabin on stb with double berth and separate head
- 3-burner gas stove with oven, ventilation hood, waste bin, 12 V fridge approx. 140 l, double stainless steel sink with mixing tab
- Interior furniture in high quality marine plywood, Satin Varnish
- Hanse companionway closing system
- Saloon table, fixed
- 'Silent Master Cabin' - cabin noise insulation
- Worktop in galley - 'Corian' Anthracite

### WOOD (FURNITURE, FLOORBOARD)

- Furniture - Mahogany Style, Satin Varnish
- Cupboard fronts in wood colour
- Floorboard – Acacia

### UPHOLSTERY, CARPETS & CURTAINS

- Mattresses for all berths
- Upholstery - Monte Carlo, colour: Cream

### DECK & OUTSIDE EQUIPMENT

- GRP deck with antislip surface, isophthalic gelcoat, colour: Signal White (RAL 9003), 1st layer vinyl ester resin
- Teak on cockpit bottom
- Teak on cockpit benches
- Teak on bathing platform
- Twin wheel steering system with emergency tiller
- 2 stainless steel steering wheels with leather cover
- 2 cockpit tables, aluminium with teak tops
- Pulpit and pushpit, stainless steel
- Railing, incl. stanchions and stainless steel wire with gateway stanchion
- Covered halyards and control lines lead to cockpit helm position, organizers and jammers, 6 retractable mooring cleats, handrail on coach roof, bow anchor fitting with step
- 2 LEWMAR 65 ST EVO manual halyard winches
- Bathing platform, hydraulic fold-out, remote control and swimming ladder
- Anchor windlass, electrical, 1500 W remote control with chain counter (only with XH1001)
- Self tacking jib system
- Mainsheet system
- 7 large and 6 small deck hatches - openable, anchor locker hatch, stowage on coach roof with acrylic glass hatch
- 6 deck coach roof windows - with hatch for aft bathroom

### RIG & SAILS

- Rig, anodized aluminium, keel stepped, with kicker, standing and running rigging and 2 reefs
- Manual jib furler
- ELVSTRÖM Dacron sails - full battened, main and jib

### NAVIGATION & INSTRUMENTS

- Illuminated compass at each helm
- Navigation lights – LED

### PROPULSION

- Fuel tank, approx. 520 l
- Engine (Diesel, approx. 107 hp) - shaft drive, 3-blade folding propeller

### EQUIPMENT

- 12 V and 230 V electric system with digital switchboard, 230 V shore power and sockets in cabins and heads
- AGM battery set, capacity: 1x 90 Ah + 2x 160 Ah AGM
- Country Version: EU / AUS
- Battery charger 70 A
- Shower unit in cockpit, warm-/coldwater
- LPG gas system, 2 bottles in stowage
- Blackwater system (appr. 85 l per head / appr. 35 l head stb aft) with deck extraction and seacock for head, electric and manual bilge pump
- Freshwater system with electric pump and 40 l hot water, heated by main engine
- Fresh water tank, appr. 770 l

### ACCESSORIES

- Mast steps

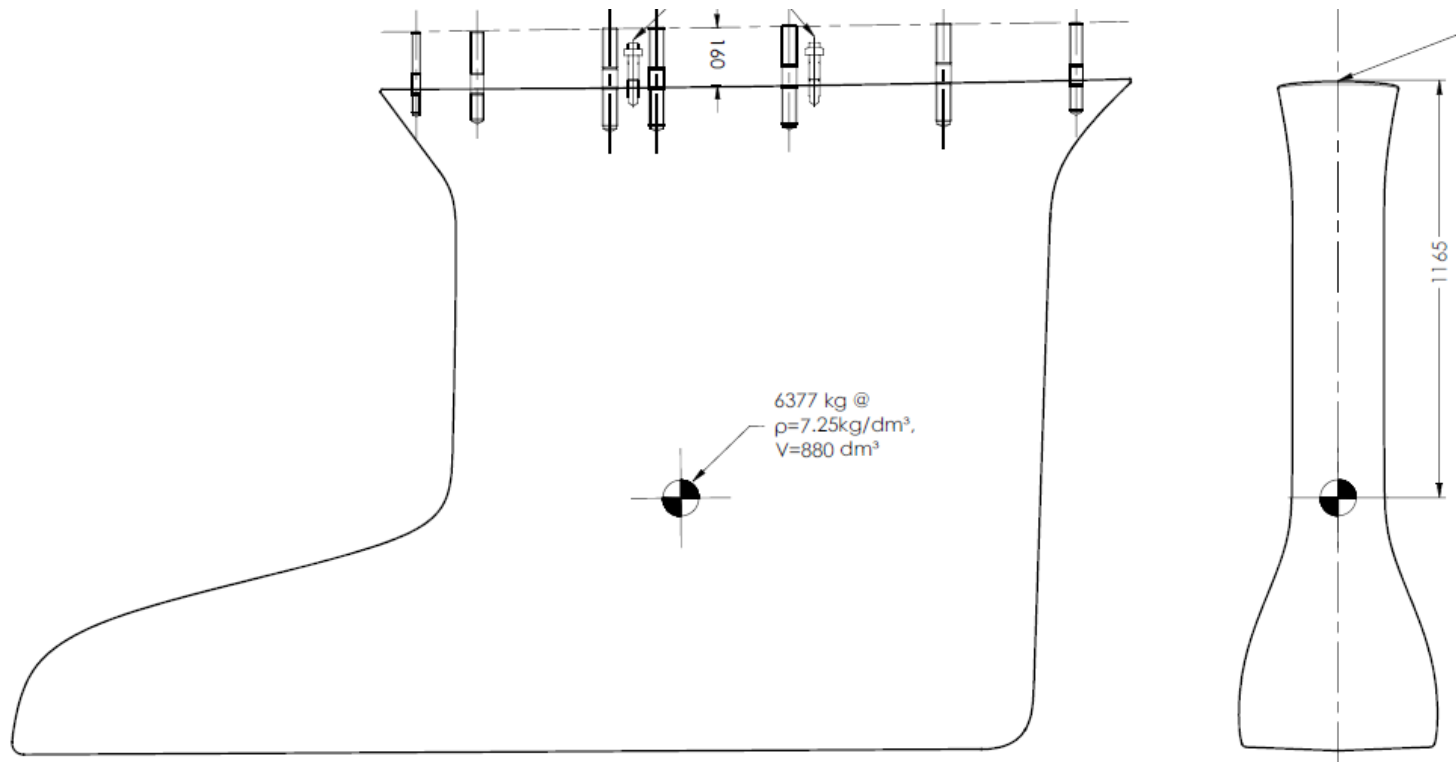
### SHIPPING & TRANSPORT

- CE - Certificate cat. A - 12
- Owners manual
- EC - Type Examination Certificate

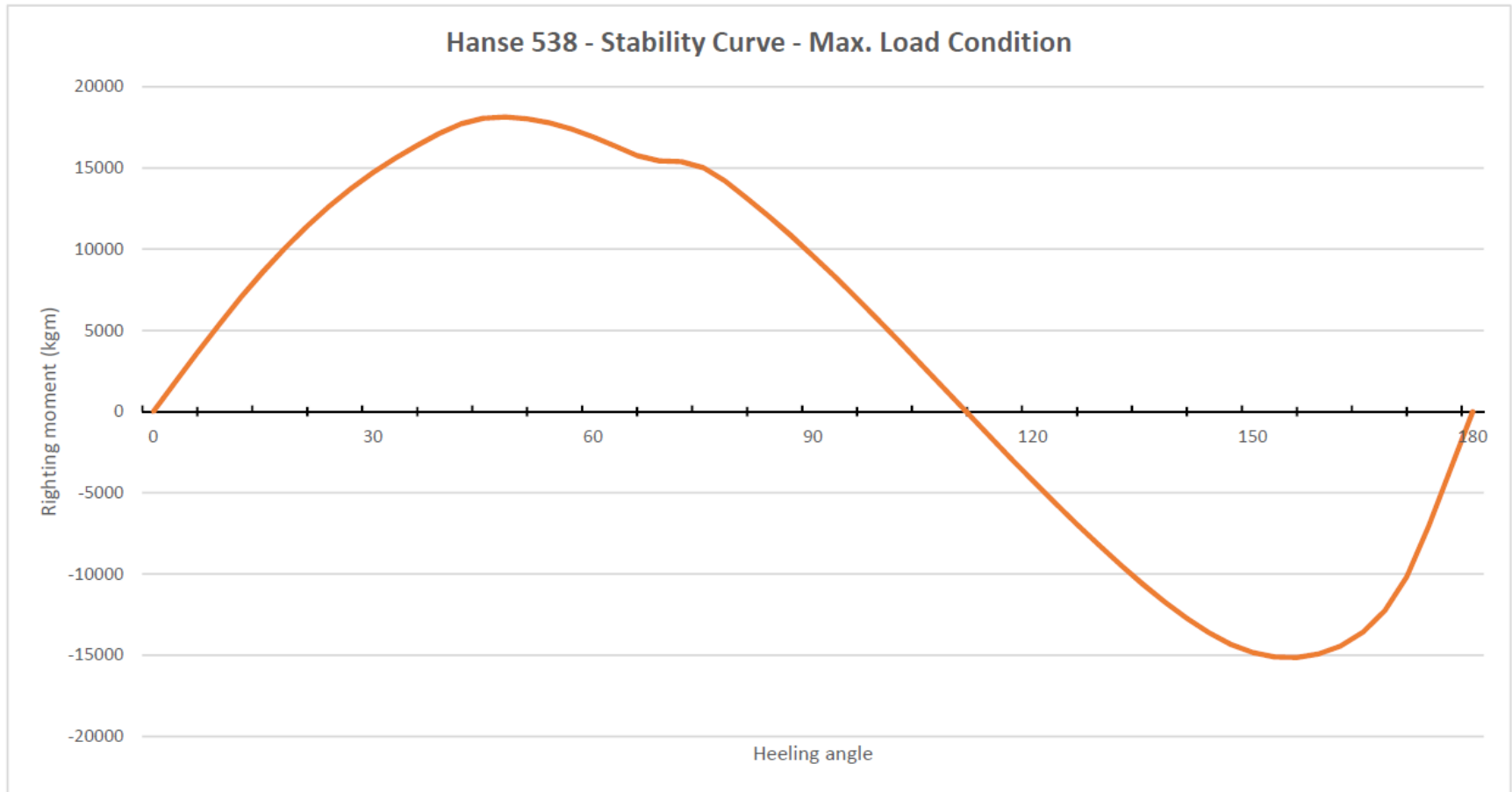
## B – Keel: Medium Draft

XB1000 L-keel, cast iron, draft: 2.55 m

<b>Draft</b>	<b>2.55 m</b>	<b>8' 34"</b>
<b>Ballast</b>	<b>6.62 t</b>	<b>14.059 lbs</b>
<b>Dspl.</b>	<b>19.60 t</b>	<b>43.211 lbs</b>

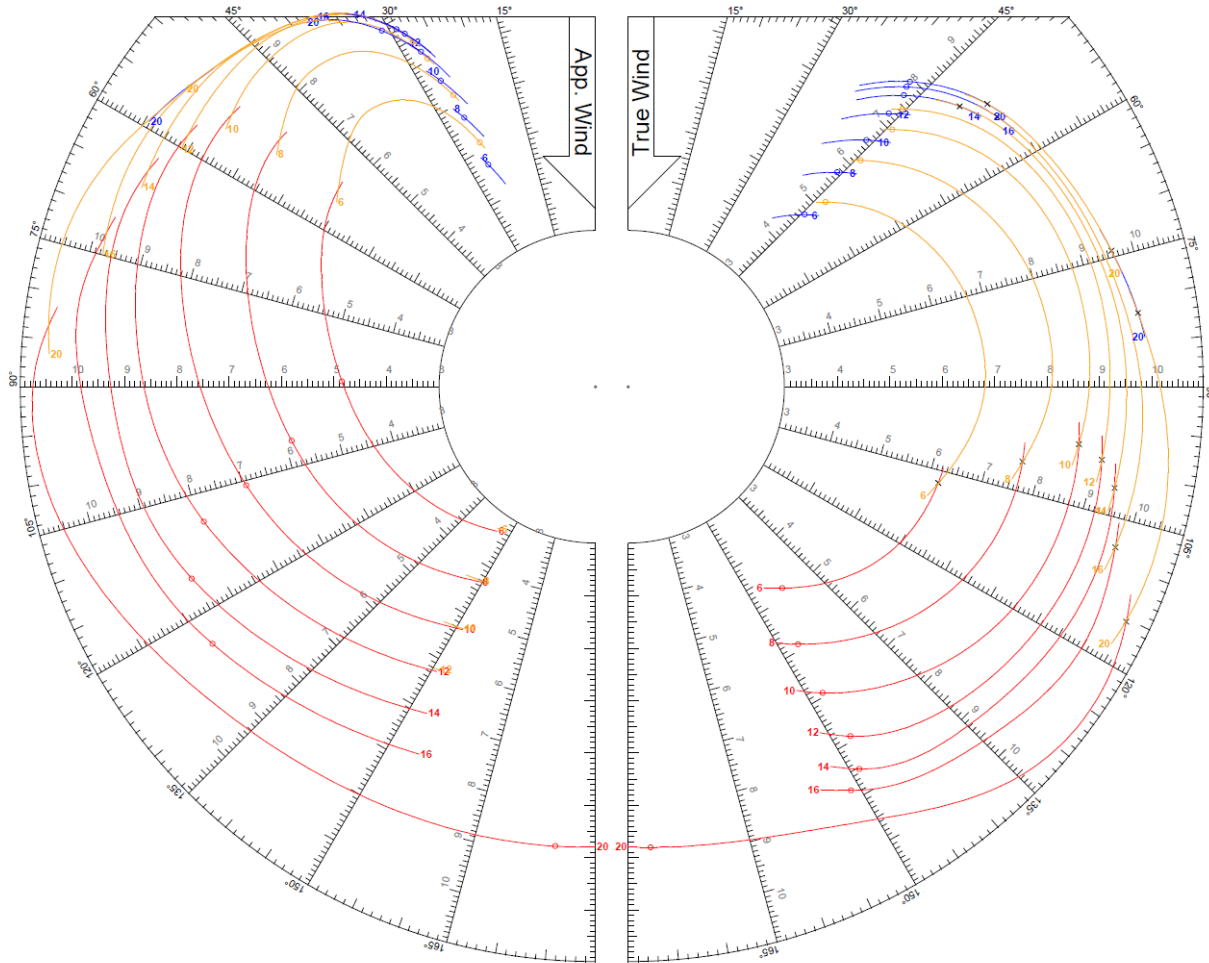


## Medium Draft - Stability



## Medium Draft – VPP

Self-tacking jib upwind and gennaker downwind







# Options



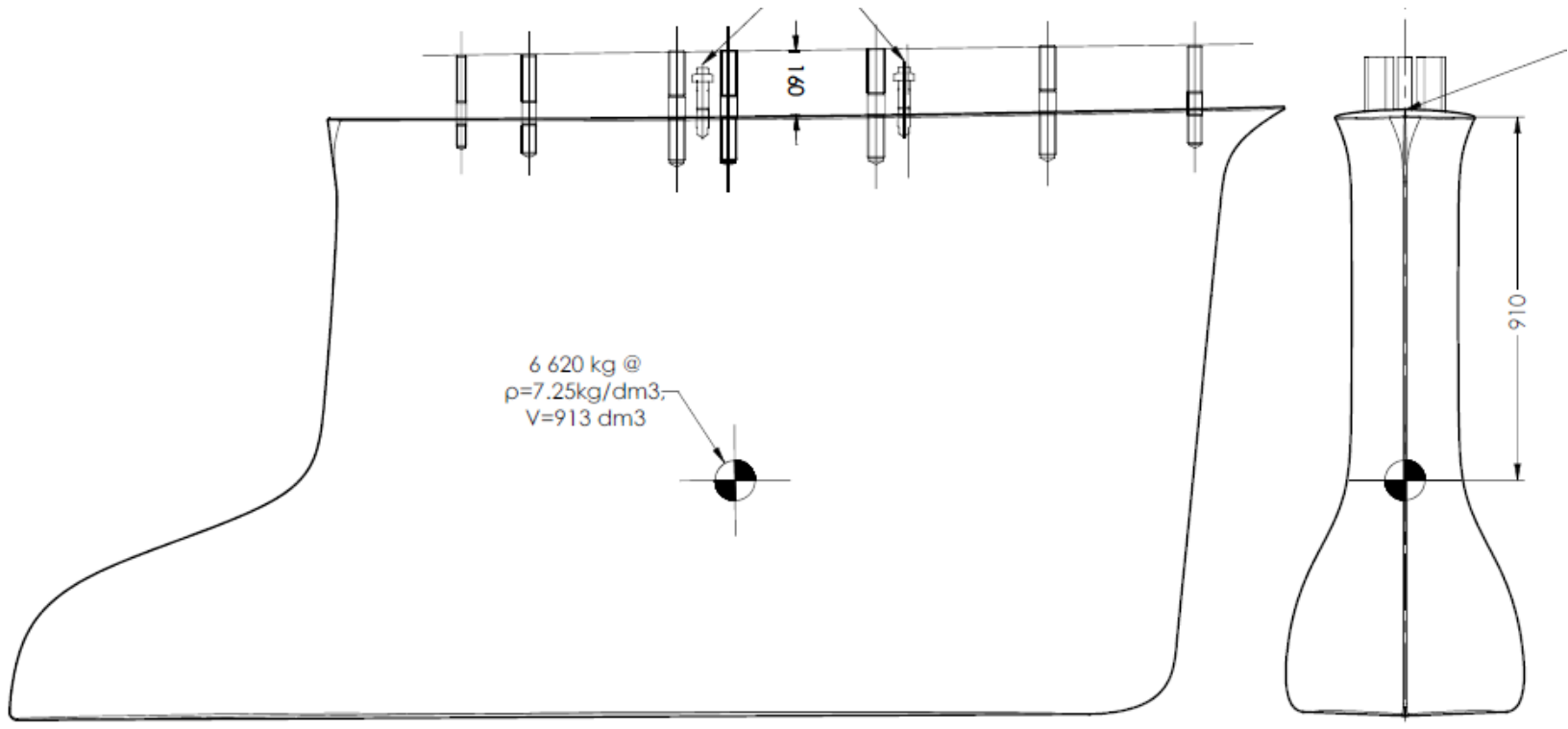
315 NEW 348 NEW 388 NEW 418 455 505 NEW 548 575 588 675

[www.hanseyachts.com](http://www.hanseyachts.com)

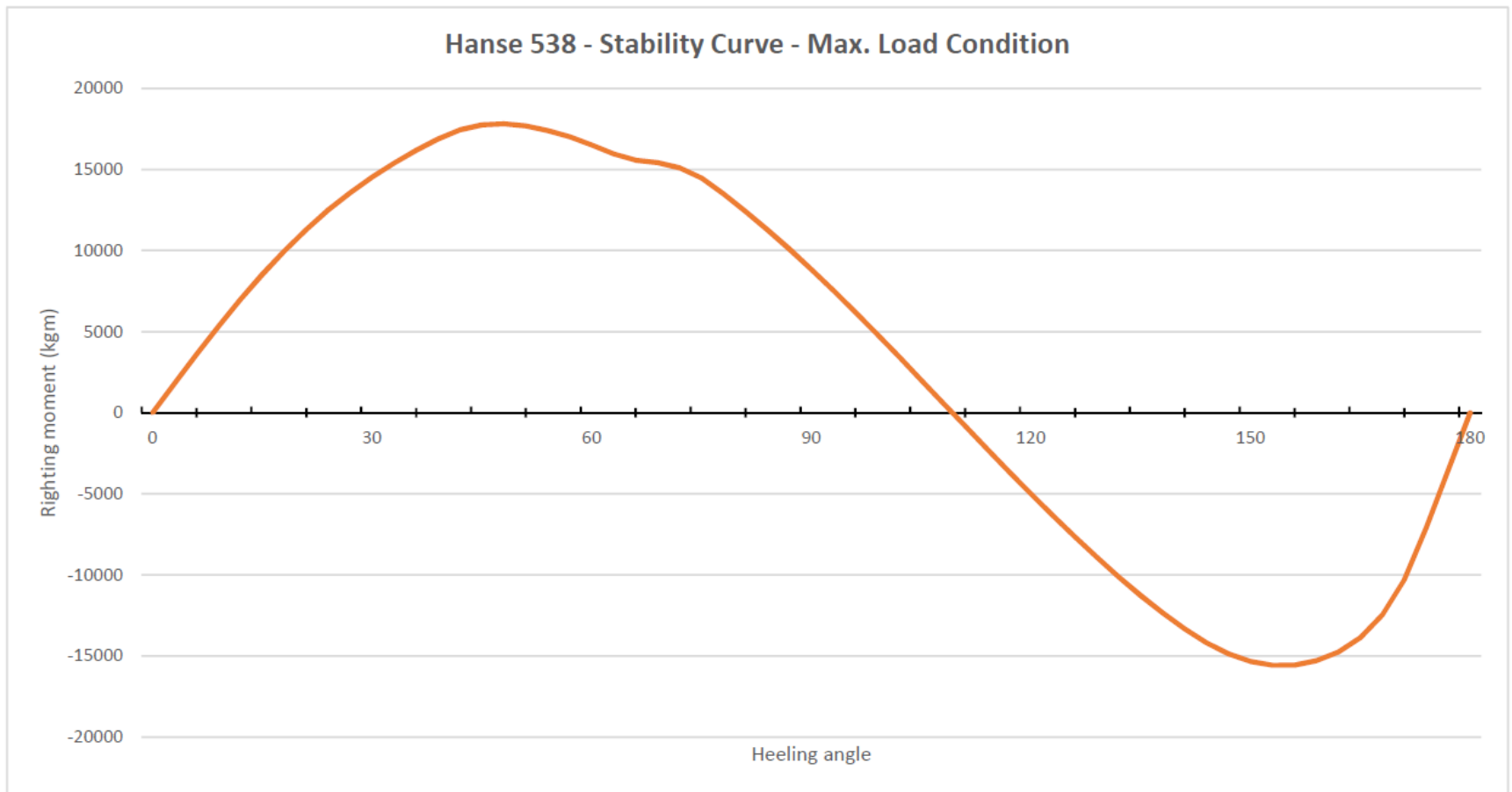
**B – Keel: Shallow Draft Keel**

XB1001 L-keel, cast iron, draft: 2.20 m

<b>Draft</b>	<b>2.20 m</b>	<b>7' 3"</b>
<b>Ballast</b>	<b>6.62 t</b>	<b>14.595 lbs</b>
<b>Dspl.</b>	<b>19.80 t</b>	<b>43.652 lbs</b>

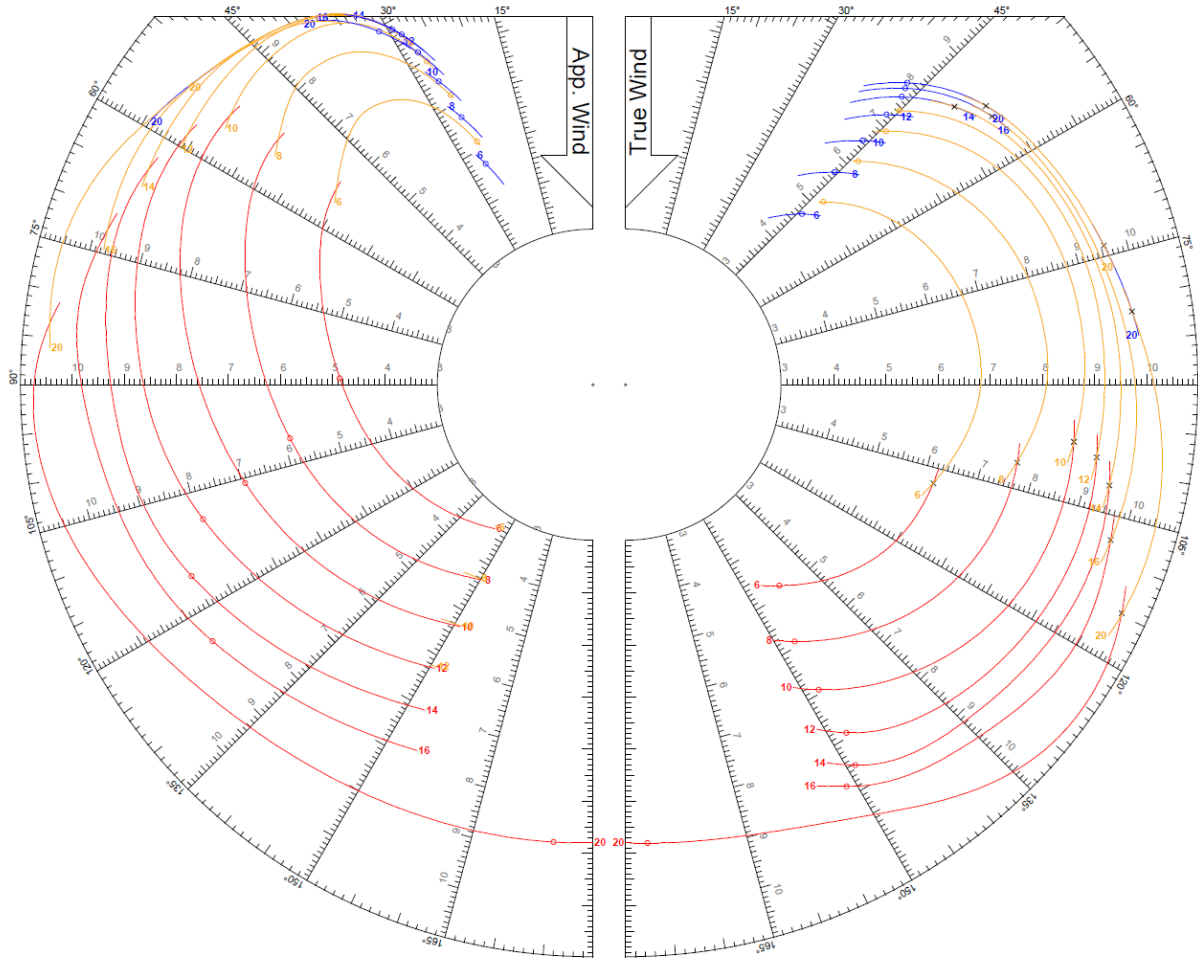


## Shallow Draft Keel - Stability



## Shallow Draft Keel – VPP

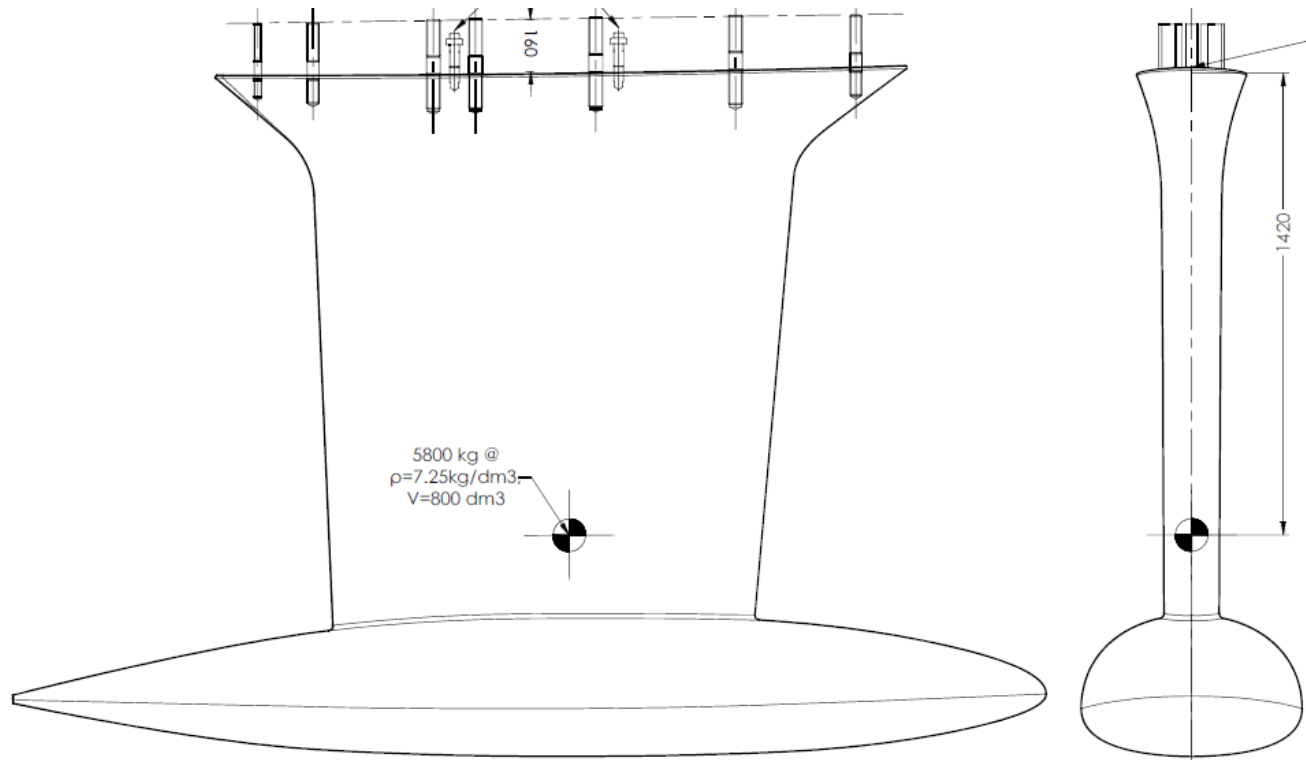
Self-tacking jib upwind and gennaker downwind



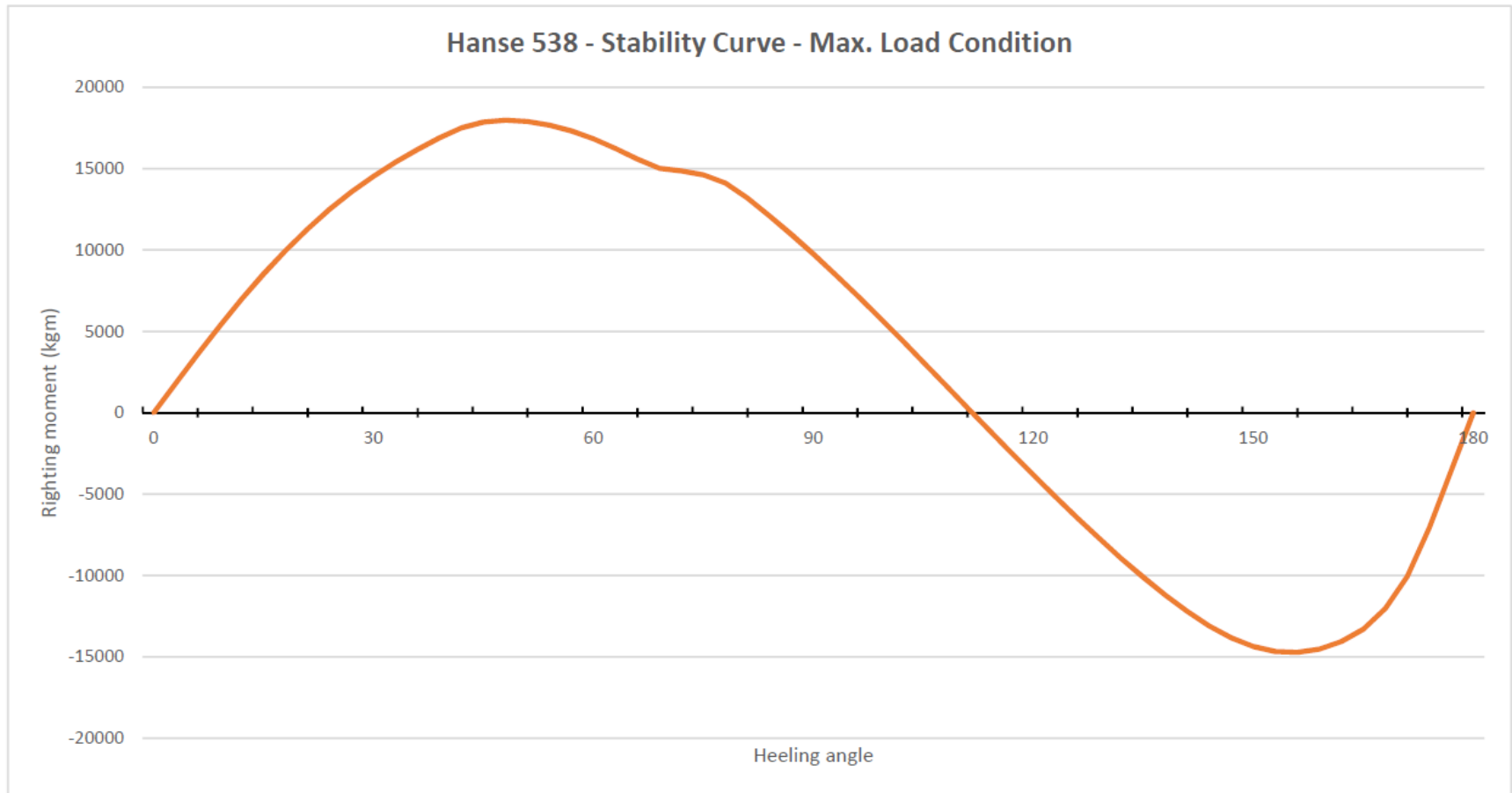
## B – Keel: Deep Draft

XB 1002 T-keel, cast iron, draft: 2.80 m

<b>Draft</b>	<b>2.80 m</b>	<b>9' 2"</b>
<b>Ballast</b>	<b>5.80 t</b>	<b>12.787 lbs</b>
<b>Dspl.</b>	<b>19.00 t</b>	<b>41.888 lbs</b>

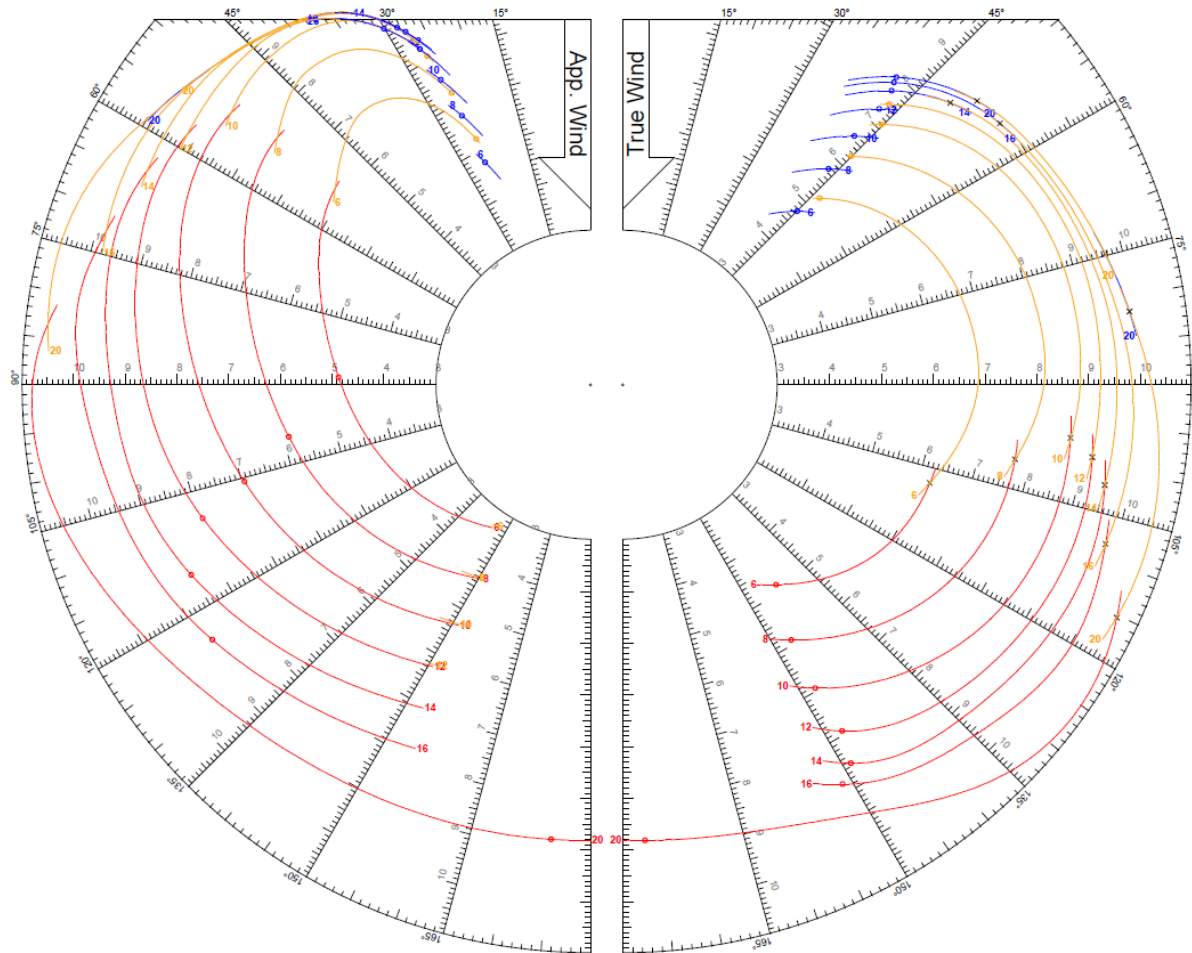


## Deep Draft Keel - Stability



## Deep Draft Keel – VPP

Self-tacking jib upwind and gennaker downwind



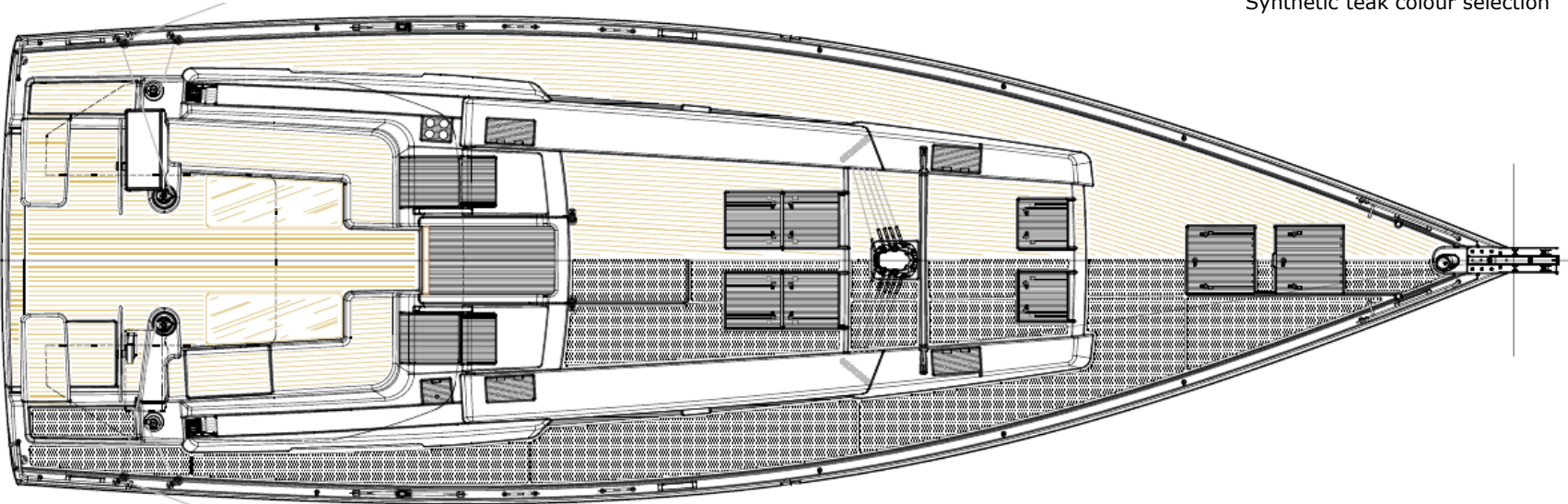
## C – Deck & outside equipment

### Teak / synthetic teak

- XC1300 / XC1301 Side deck
- XC1310 / XC1311 Coachroof
- XC1325 / XC1326 Cockpit bottom
- XC1333 / XC1334 Helmsman seat
- XC1340 / XC1341 Cockpit benches
- XC1350 / XC1351 Bathing platform



Synthetic teak colour selection



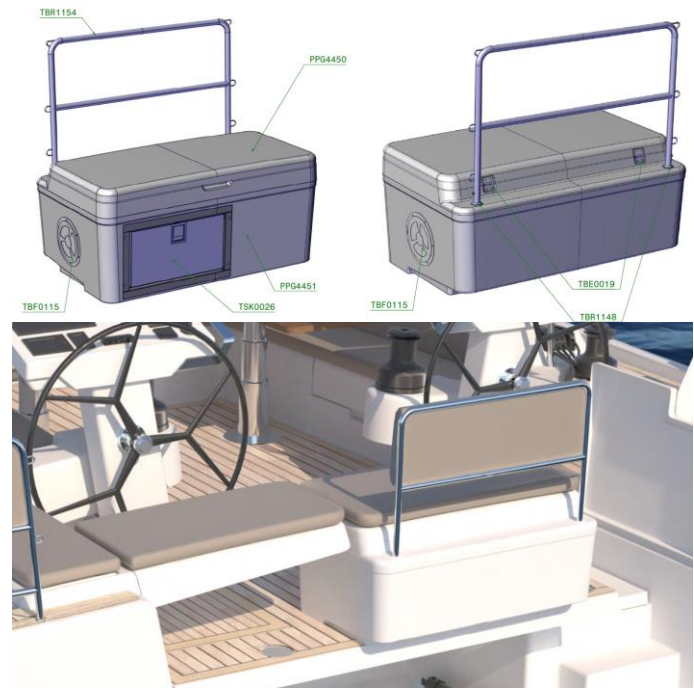
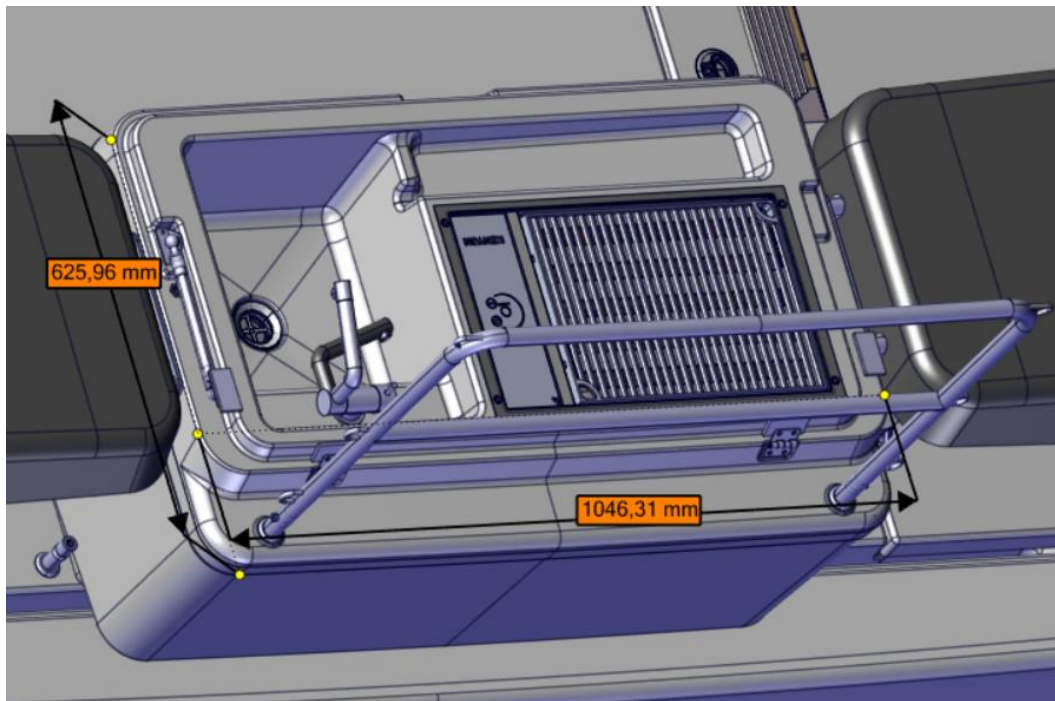


## C – Deck & outside equipment

XC3100 Wetbar with BBQ and sink with mixing tab

→ with teak (standard) or synthetic teak on top

XH5101 Additional fridge in wetbar (only with XC3100)



## C – Deck & outside equipment

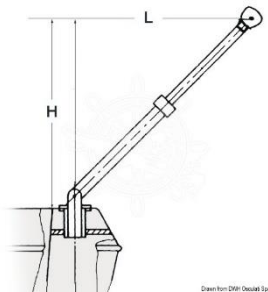
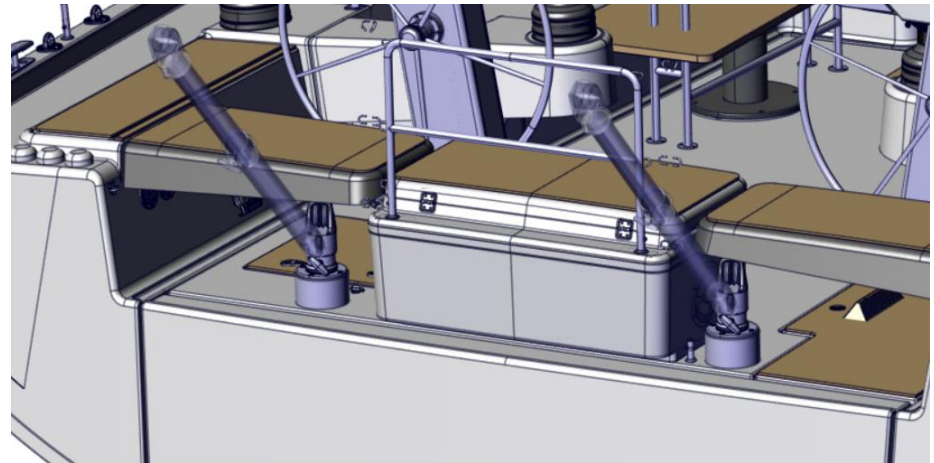
XC6000 Swimming stairs, extractable, manual



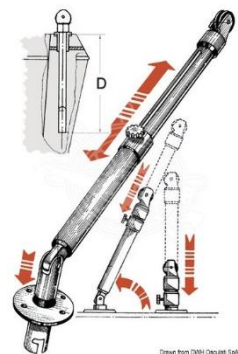
## C – Deck & outside equipment

XC7200 Davits, telescopic

Load (couple): 180 kg  
Height H: 1.02 m  
Outreach L: 1.10 m



Drawn from DWG Decable Spk



Drawn from DWG Decable Spk

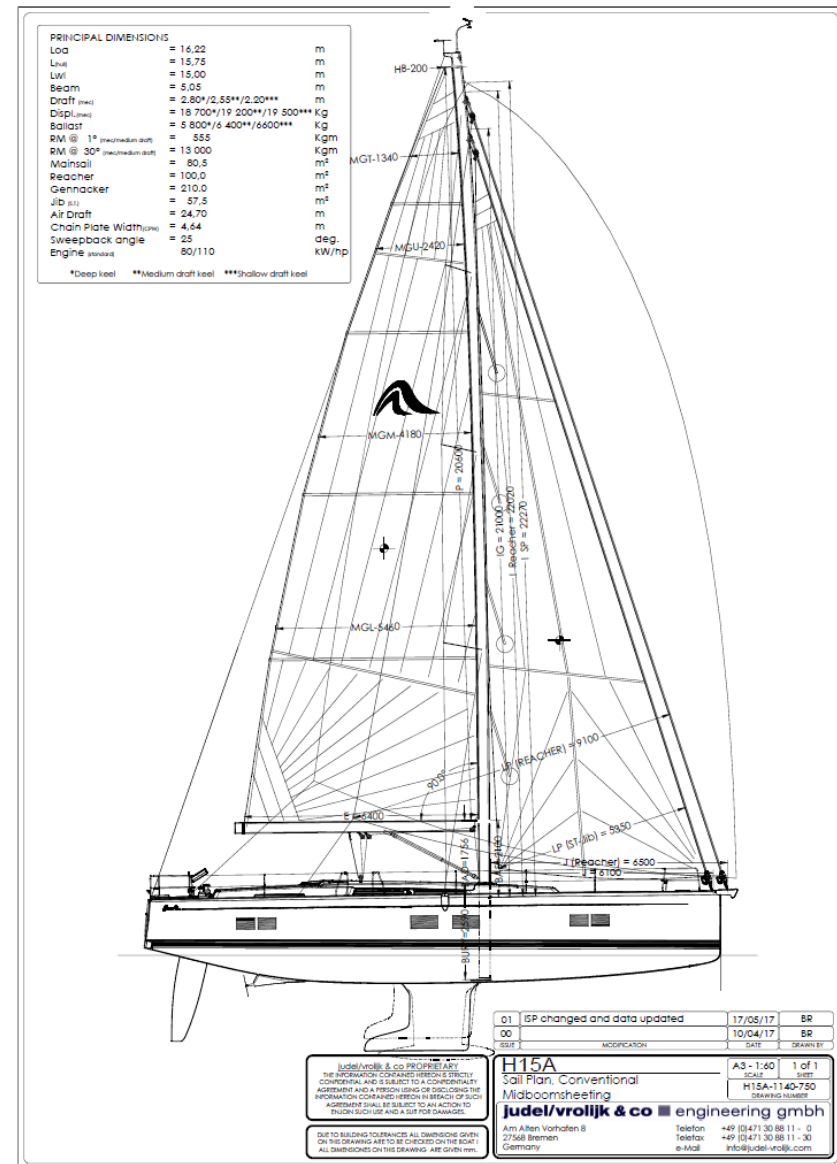


## E – Rig & sails: Sail Plan

Conventional midboom sheeting

XE1000 Rig, anodized aluminium

<b>Total sail area</b>	<b>138.00 m<sup>2</sup></b>	<b>1.485 sq ft</b>
<b>Mainsail</b>	<b>80.50 m<sup>2</sup></b>	<b>867 sq ft</b>
<b>Jib</b>	<b>57.50 m<sup>2</sup></b>	<b>619 sq ft</b>
<b>Reacher</b>	<b>100.00 m<sup>2</sup></b>	<b>1.076 sq ft</b>
<b>Gennaker</b>	<b>210.00 m<sup>2</sup></b>	<b>2.260 sq ft</b>
<b>E</b>	<b>6.40 m</b>	<b>21' 0"</b>
<b>P</b>	<b>20.60 m</b>	<b>67' 7"</b>
<b>J</b>	<b>6.10 m</b>	<b>20' 0"</b>
<b>IG</b>	<b>21.00 m</b>	<b>68' 11"</b>
<b>Mast length above WL</b>	<b>24.70 m</b>	<b>81' 0"</b>



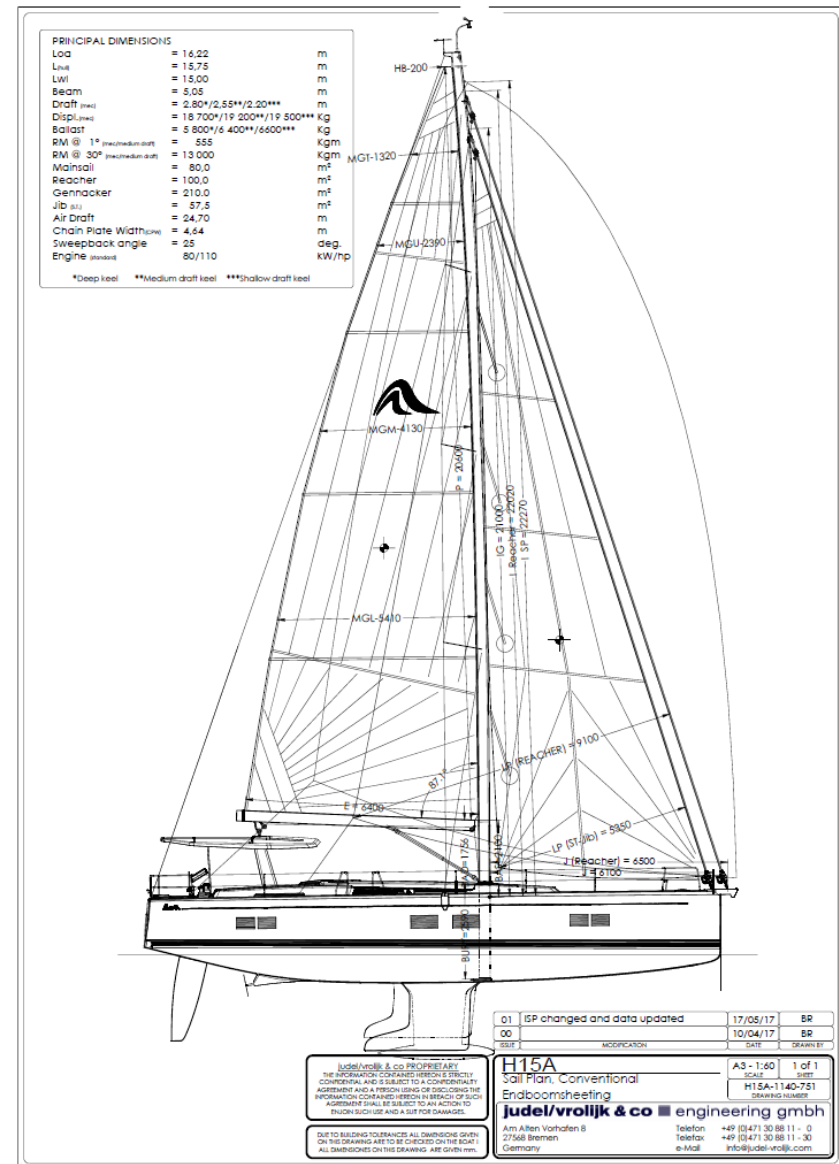
## E – Rig & sails: Sail Plan

### Endboom sheeting

XE1000 Rig, anodized aluminium  
 XE2051 GRP hard top for cockpit with canvas sliding roof – white

XE2052 GRP hard top for cockpit with canvas sliding roof – outside surface painted (colour selection)

<b>Total sail area</b>	<b>137.50 m<sup>2</sup></b>	<b>1.480 sq ft</b>
<b>Mainsail</b>	<b>80.00 m<sup>2</sup></b>	<b>861 sq ft</b>
<b>Jib</b>	<b>57.50 m<sup>2</sup></b>	<b>619 sq ft</b>
<b>Reacher</b>	<b>100.00 m<sup>2</sup></b>	<b>1.076 sq ft</b>
<b>Gennaker</b>	<b>210.00 m<sup>2</sup></b>	<b>2.260 sq ft</b>
<b>E</b>	<b>6.40 m</b>	<b>21' 0"</b>
<b>P</b>	<b>20.60 m</b>	<b>67' 7"</b>
<b>J</b>	<b>6.10 m</b>	<b>20' 0"</b>
<b>IG</b>	<b>21.00 m</b>	<b>68' 11"</b>
<b>Mast length above WL</b>	<b>24.70 m</b>	<b>81' 0"</b>

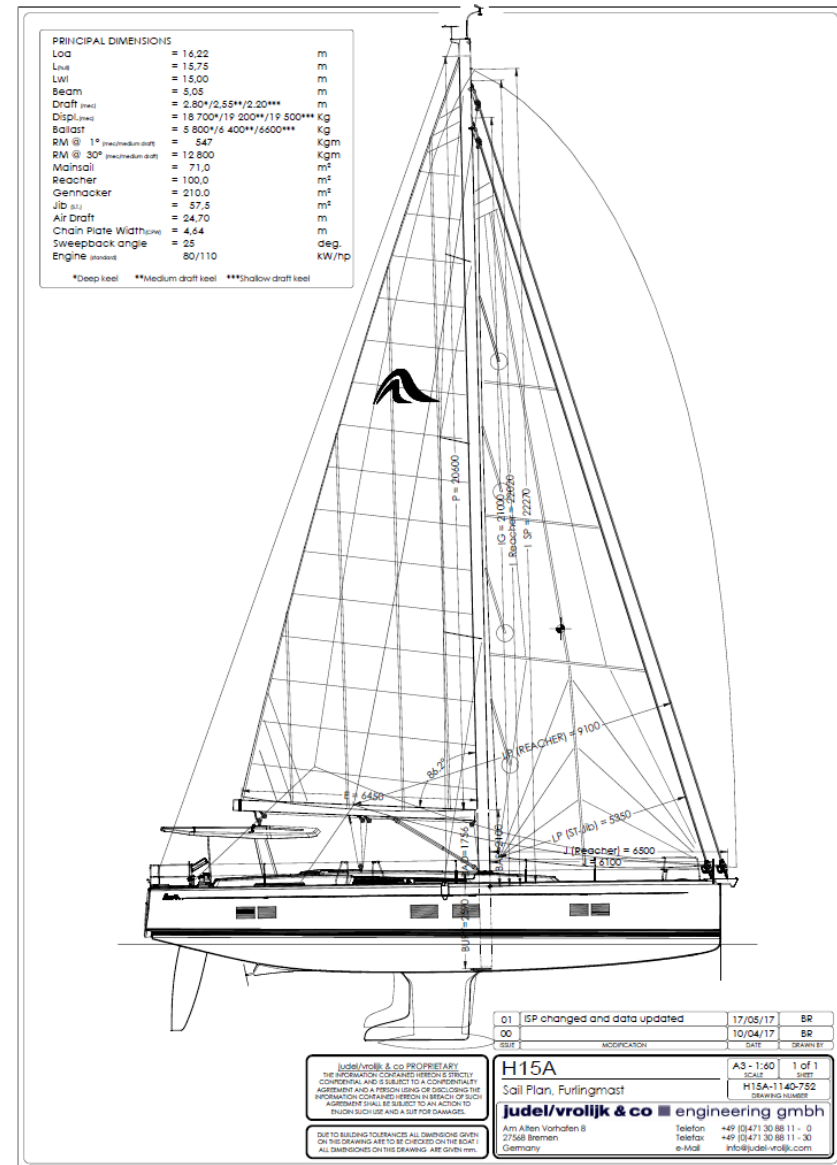


## E – Rig & sails: Sail Plan

### Furling Rig

XE1001 Rig, anodized aluminium with manual inmast furling system  
 XE1010 Rig, anodized aluminium with electric inmast furling system

<b>Total sail area</b>	<b>128.50 m<sup>2</sup></b>	<b>1383 sq ft</b>
<b>Mainsail Jib</b>	<b>71.00 m<sup>2</sup></b>	<b>764 sq ft</b>
<b>Jib</b>	<b>57.50 m<sup>2</sup></b>	<b>619 sq ft</b>
<b>Reacher</b>	<b>100.00 m<sup>2</sup></b>	<b>1.076 sq ft</b>
<b>Gennaker</b>	<b>210.00 m<sup>2</sup></b>	<b>2.260 sq ft</b>
<b>E</b>	<b>6.45 m</b>	<b>21' 2"</b>
<b>P</b>	<b>20.60 m</b>	<b>67' 7"</b>
<b>J</b>	<b>6.10 m</b>	<b>20' 0"</b>
<b>IG</b>	<b>21.00 m</b>	<b>68' 11"</b>
<b>Mast length above WL</b>	<b>24.70 m</b>	<b>81' 0"</b>



## E – Rig & sails: Sail Plan

Second forestay

XE1221 Second forestay with second furler, electrical (only with XH1001)

<b>Total sail area</b>	<b>128.50 m<sup>2</sup></b>	<b>1383 sq ft</b>
<b>Mainsail Jib</b>	<b>71.00 m<sup>2</sup></b>	<b>764 sq ft</b>
<b>Jib</b>	<b>57.50 m<sup>2</sup></b>	<b>619 sq ft</b>
<b>Reacher</b>	<b>100.00 m<sup>2</sup></b>	<b>1.076 sq ft</b>
<b>Gennaker</b>	<b>210.00 m<sup>2</sup></b>	<b>2.260 sq ft</b>
<b>E</b>	<b>6.45 m</b>	<b>21' 2"</b>
<b>P</b>	<b>20.60 m</b>	<b>67' 7"</b>
<b>J</b>	<b>6.10 m</b>	<b>20' 0"</b>
<b>IG</b>	<b>21.00 m</b>	<b>68' 11"</b>
<b>Mast length above WL</b>	<b>24.70 m</b>	<b>81' 0"</b>



## F – Navigation & Instruments

### B&G Instrument range



Triton2 Multifunction display



H5000 Multifunction display



Zeus3 chartplotter 12"



Zeus3 chartplotter 9"



Triton2 Autopilot controller



H5000 Autopilot controller



4G Broadband radar



Hydra CPU



H50 wireless handset



V50 VHF



## H – Propulsion

XG1005 Engine (Diesel, approx. 107 hp) - shaft drive, 3-blade folding propeller  
XG3211 Add. electronic throttle control at helm position, on port

XG3101 Bowthruster, 24 V, retractable, incl. battery  
XG3201 Sternthruster, 24 V, retractable, incl. battery (only with XG3101)



## K – Radio & entertainment

XK1000 FUSION MS-AV750 Multimedia radio with bluetooth and CD/DVD player - for saloon and cockpit

XK1010 FUSION MS-AV750 Multimedia radio with bluetooth and CD/DVD player - for master cabin

XK1200 FUSION MS-AB206 subwoofer with integrated amplifier in saloon

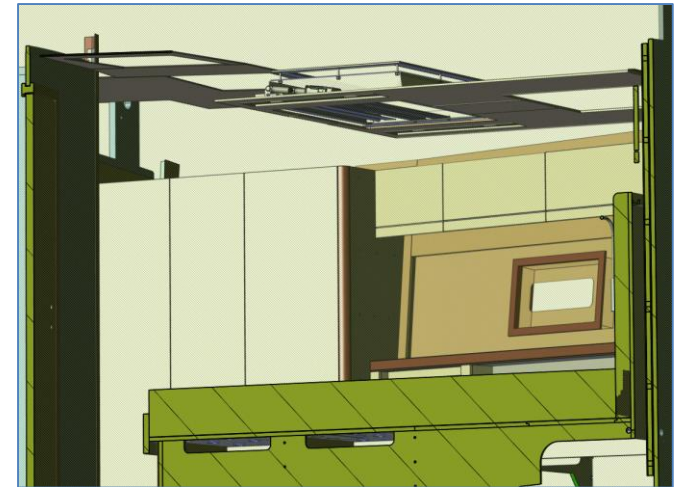
XK3000 FUSION MS-NRX remote control in cockpit

XK5030 FUSION wireless link - remote control via mobile devices

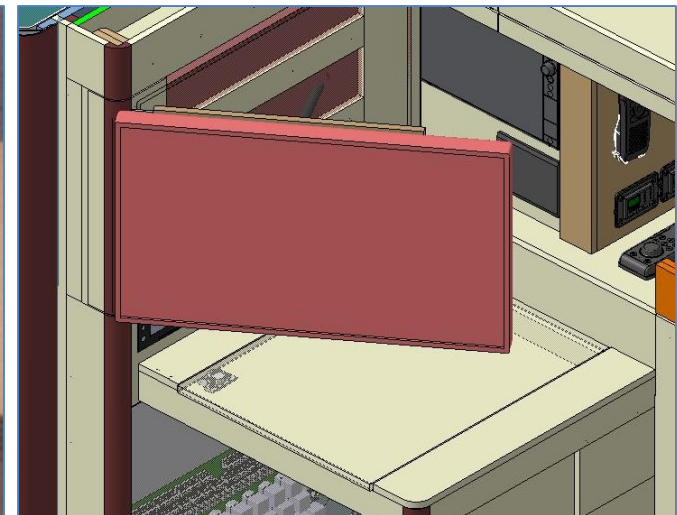


## K – Radio & entertainment

XK4010 TV preparation in master cabin (only with XL2001)  
XK4110 LED TV flat screen in master cabin (only with XL2001)



XK4040 TV preparation in saloon  
XK4140 LED TV flat screen in saloon



## L – Layout & interior

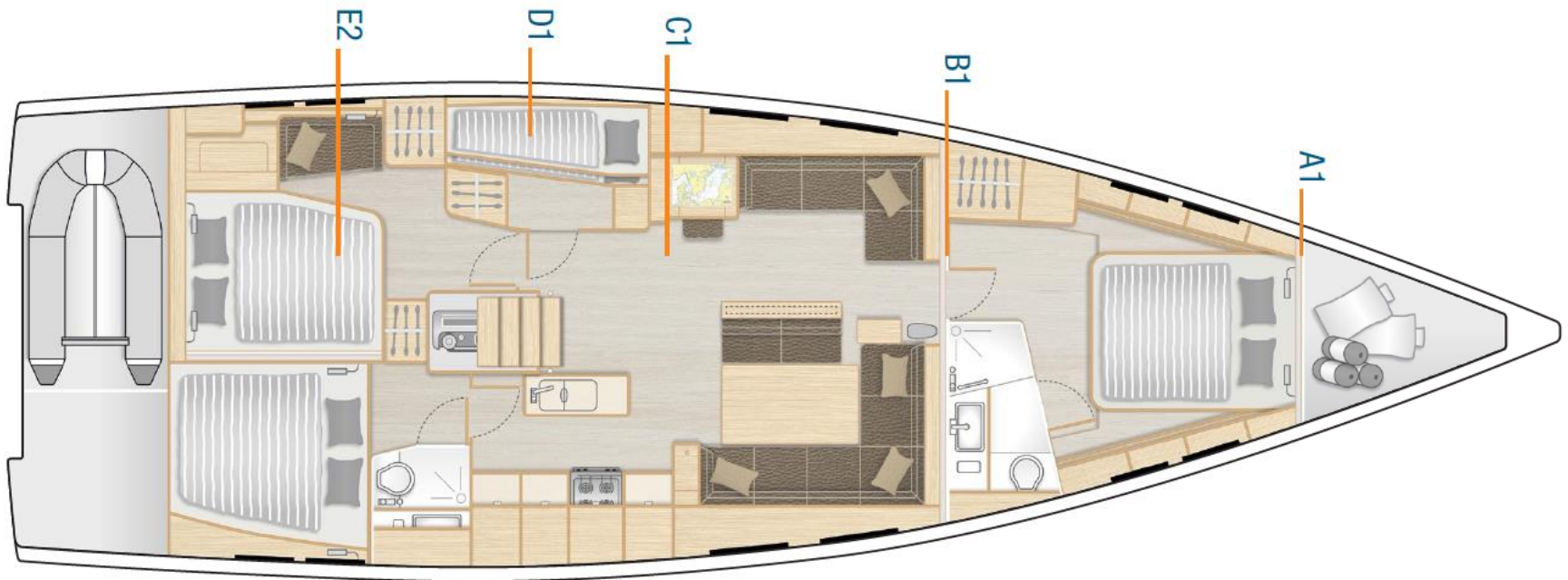
XL1001 A1: Sail locker with extensive storage space

XL2001 B1: Master cabin with island double berth, storage space and a head with separate shower stall

XL3001 C1: Saloon with full functional island galley and dining area on stb and lounge area with chart table on port

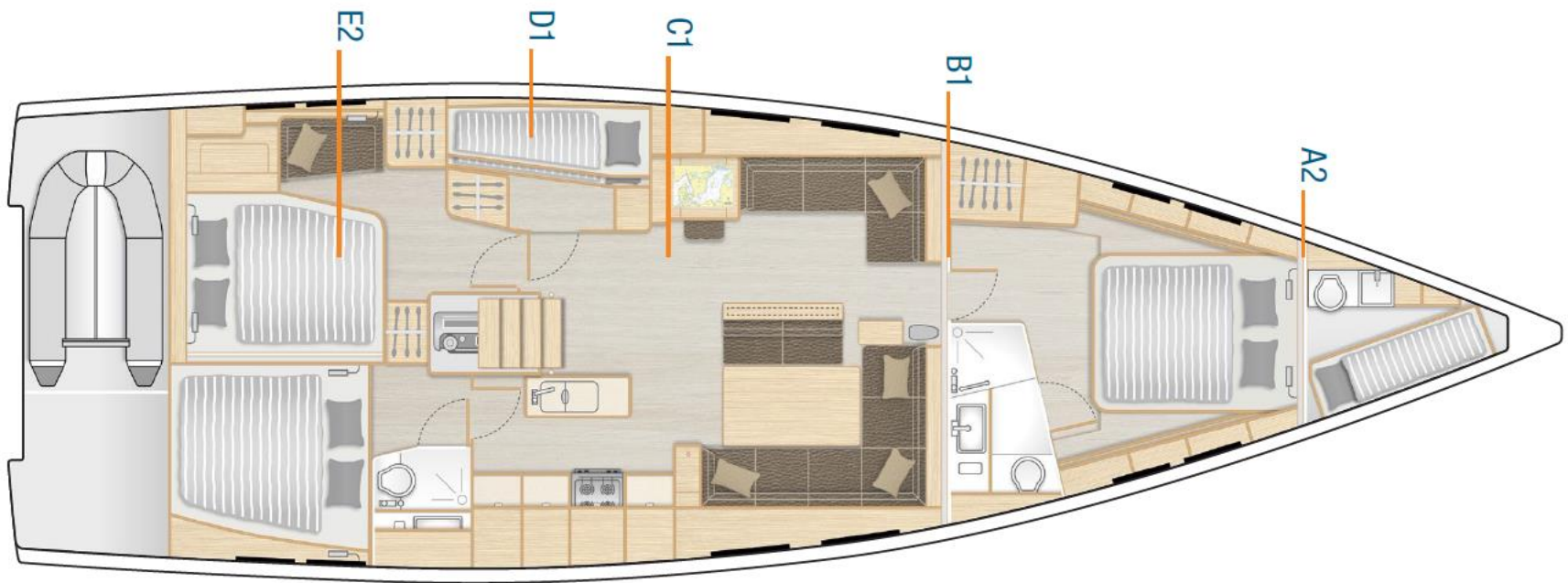
XL4001 D1: Cabin with double bunk bed on port with storage incl. hanging locker

XL5002 E2: 2 aft cabins with VIP cabin on port incl. "Queen size" bed and guest cabin on stb with double berth and separate head



## L – Layout & interior

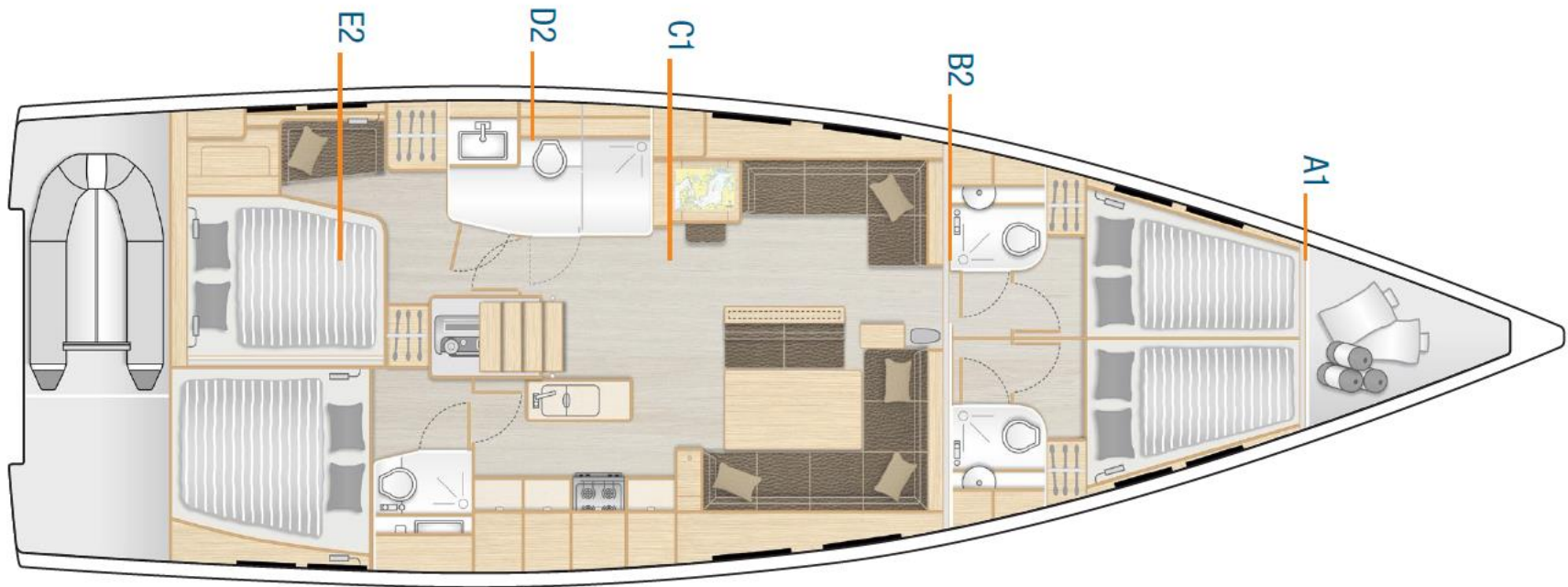
XL1002 A2: Crew cabin with sink, toilet and storage space (only with XL2001)



## L – Layout & interior

XL2002 B2: 2 fwd cabins with double berth, hanging locker and separate head with shower

XL4002 D2: Head on port with sink, toilet and separate shower stall



## L – Layout & interior

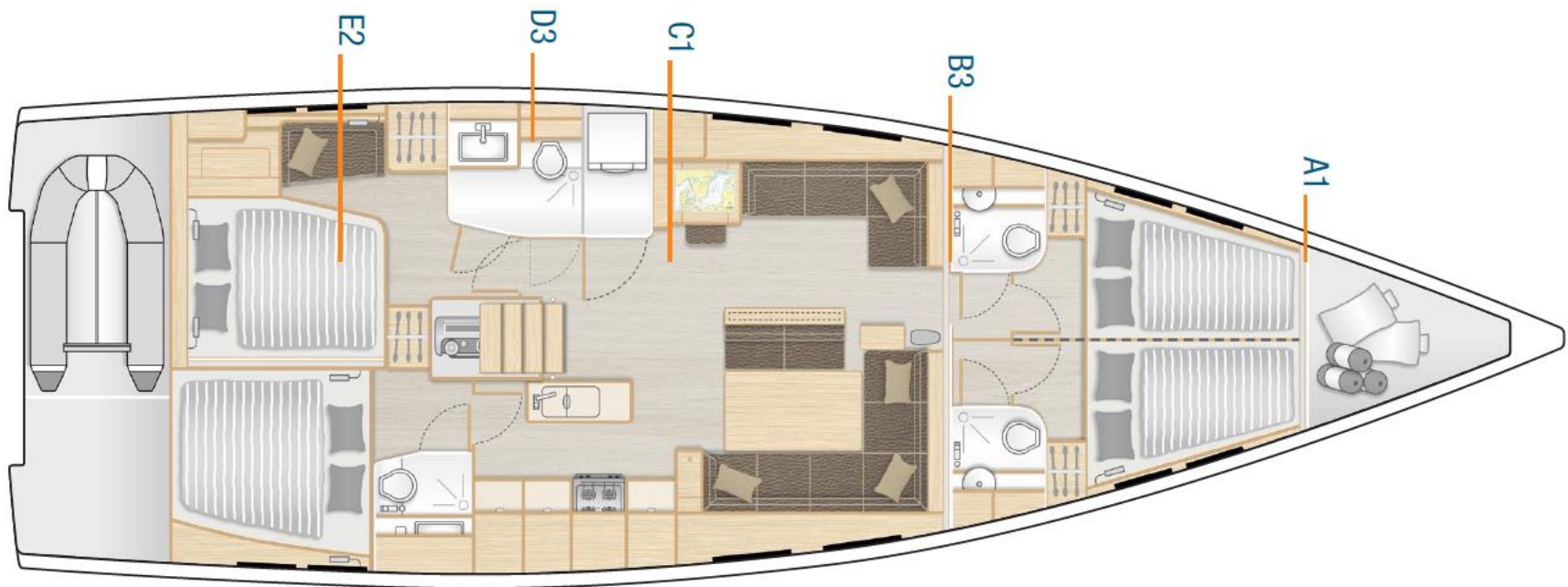
XL2003 B3: 2 fwd cabins with double berth, hanging locker and separate head on port with shower - convertible by a removable bulkhead into a single cabin

XL4003 D3: Head on port with sink, toilet and separate utility room

XH5110 Additional fridge in utility room (only with XL4003)

XH5120 Additional freezer in utility room (only with XL4003)

XH5311 Washing machine with dryer function, front opening, in utility room (only with XL4003)



## L – Layout & interior

XL7210 Add. double seat with stowage for dining area in saloon and navigation seat



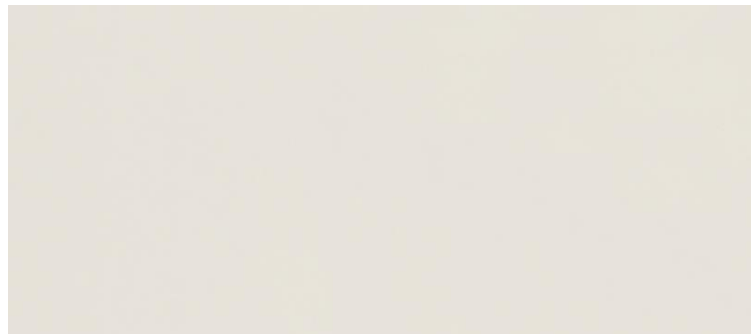


## L – Layout & interior

XL7600 Worktop in galley - Corian Anthracite



XL7601 Worktop in galley - Corian Vanilla



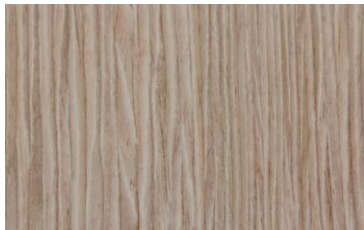
M – Wood

XM1100 Furniture - Mahogany Style, Satin Varnish



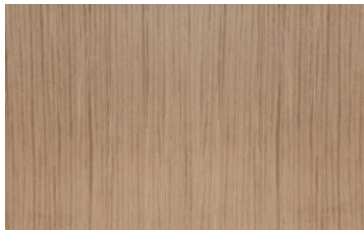
XM1150 Furniture - High Gloss Finish (only for XM1100 or XM1101)

XM1101 Furniture – Canadian Chestnut, Satin Varnish



XM1161 Cupboard fronts coloured (partial as per design - colour selection)

XM1104 Furniture – French Oak, Satin Varnish



Pearl Grey



Dove Grey

## M – Wood

XM1200 Floorboard – Acacia



XM1203 Floorboard – Delight Oak



XM1201 Floorboard - Classic Stripes



XM1202 Floorboard - Noce Nero

